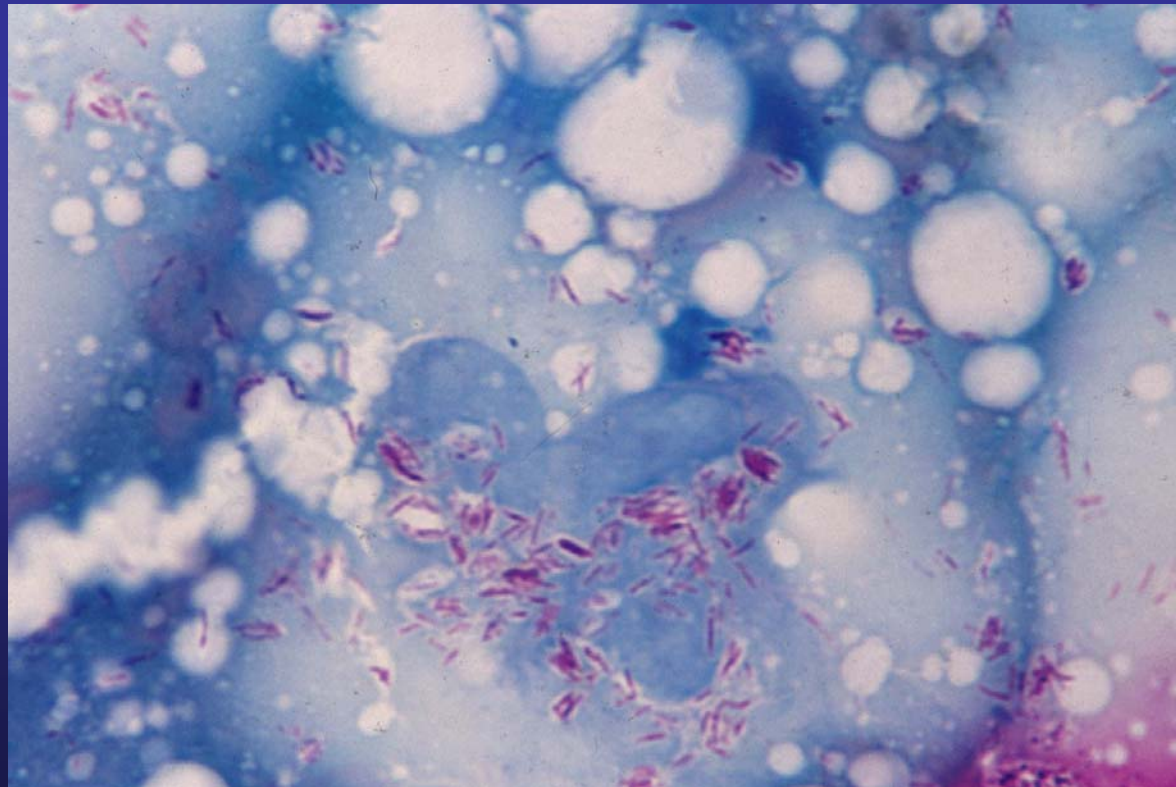


Acid-fast rods

Mycobacterium, Nocardia

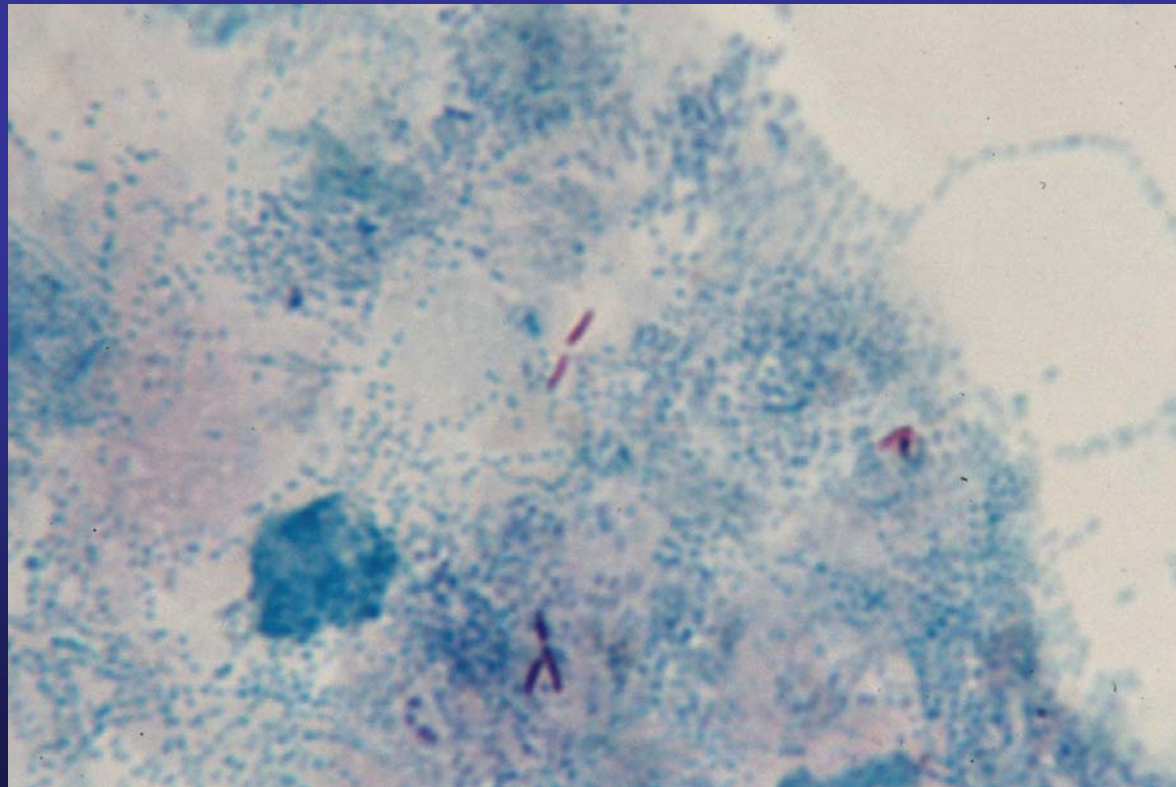
Mycobacterium leprae

Acid-fast rods, separate and in clusters, in a skin lesion from a patient with lepromatous leprosy (Ziehl-Neelsen stain).



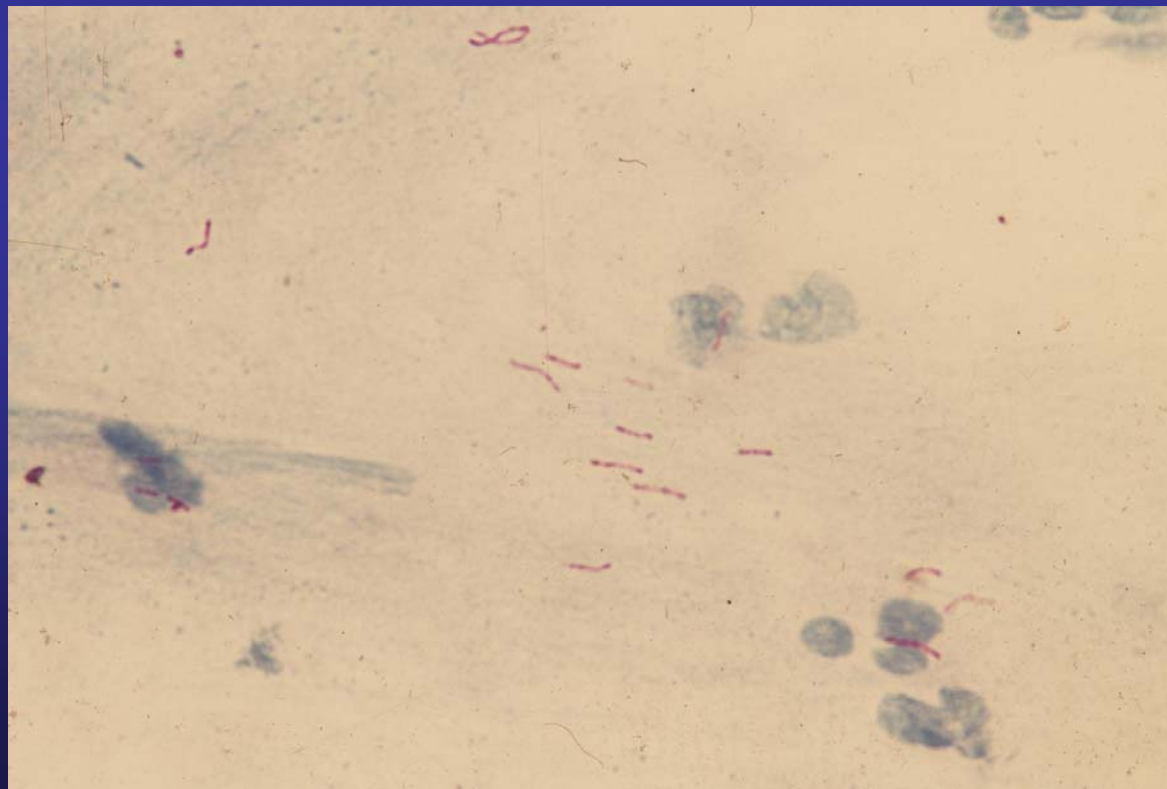
Mycobacterium smegmatis

Acid-fast rods in urine (Ziehl-Neelsen stain).



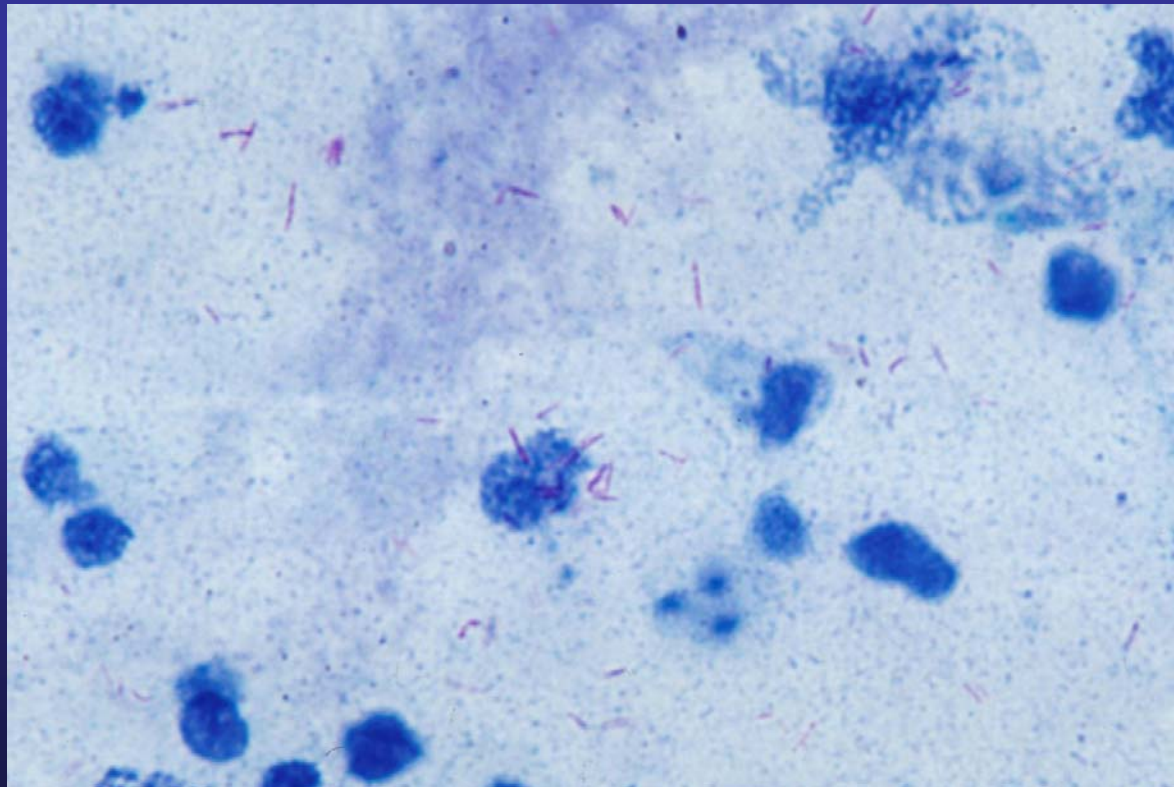
Mycobacterium tuberculosis

Red staining granular rods in sputum (Ziehl-Neelsen stain).



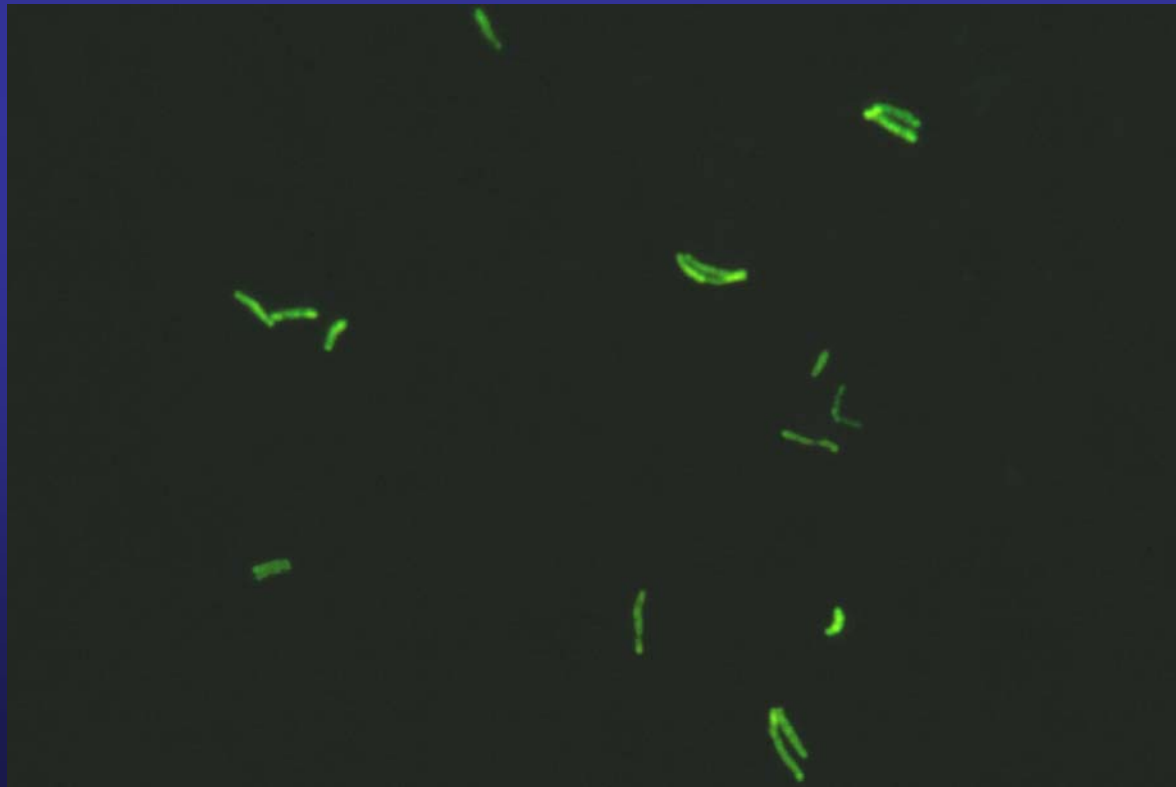
Mycobacterium tuberculosis

Multiple red staining granular rods in sputum
(Ziehl-Neelsen stain).



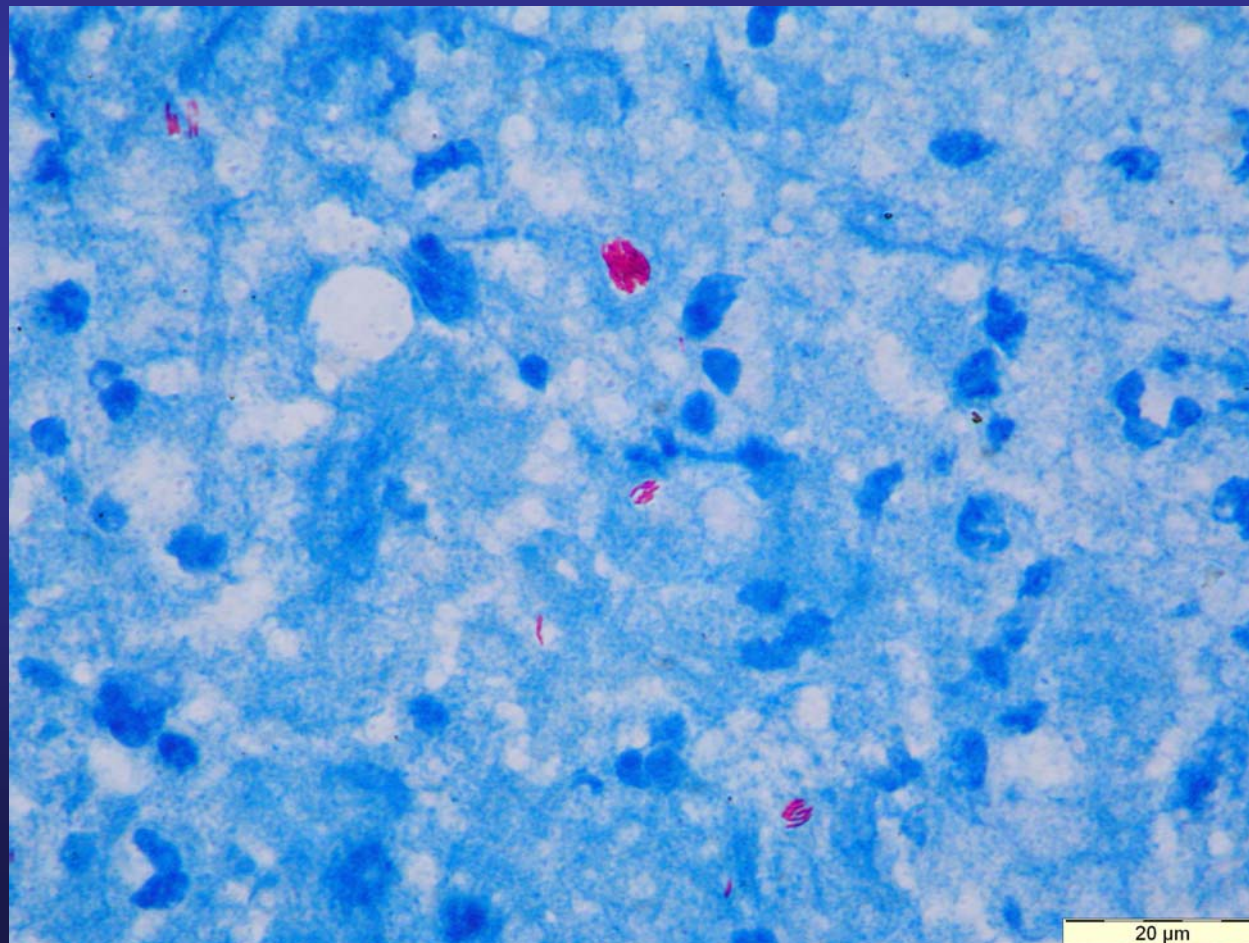
Mycobacterium tuberculosis

Yellow-green rods on a dark background in sputum
(Auramine fluorescence).



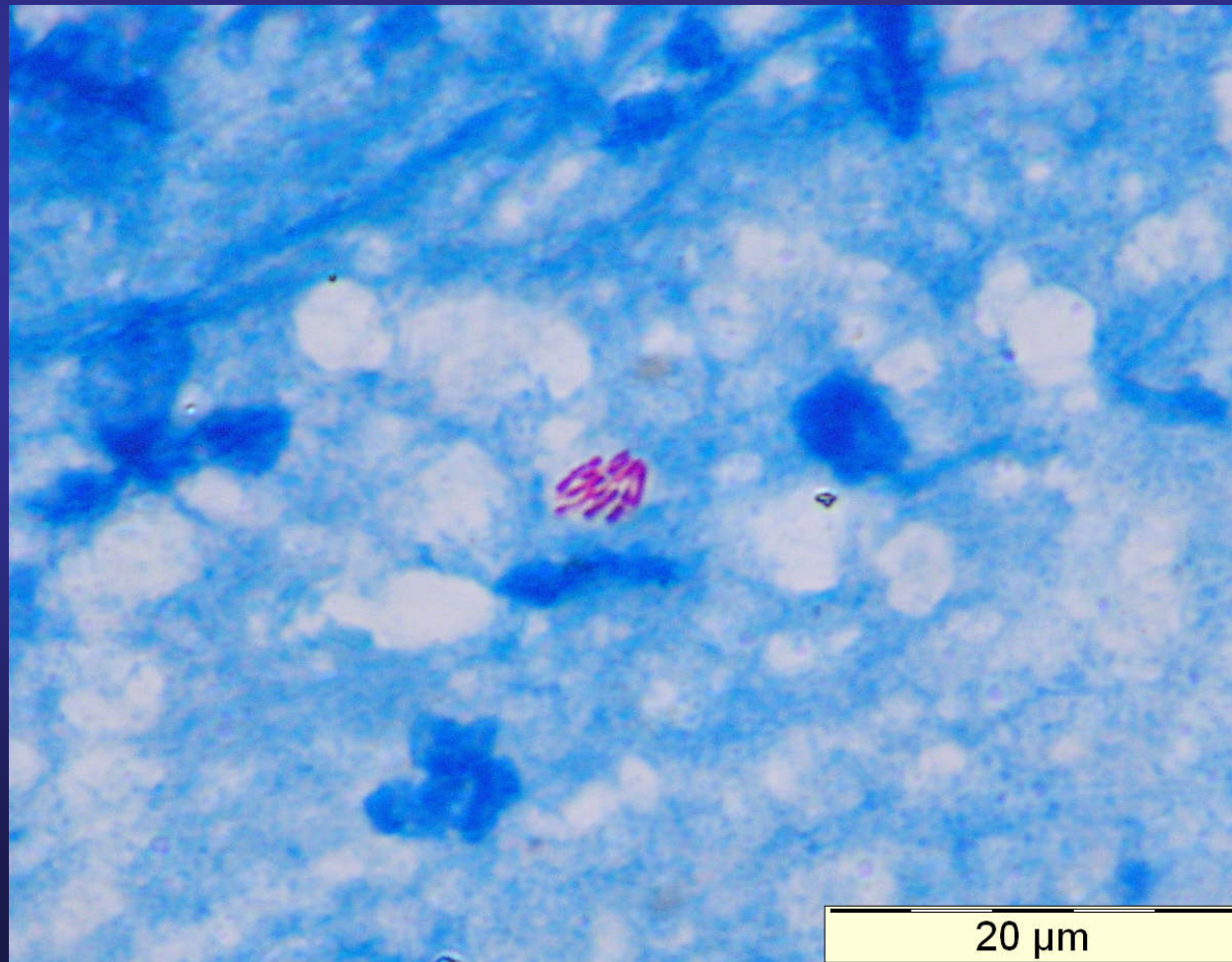
Mycobacterium ulcerans

Red staining rods in a Buruli ulcer
(Ziehl-Neelsen stain).



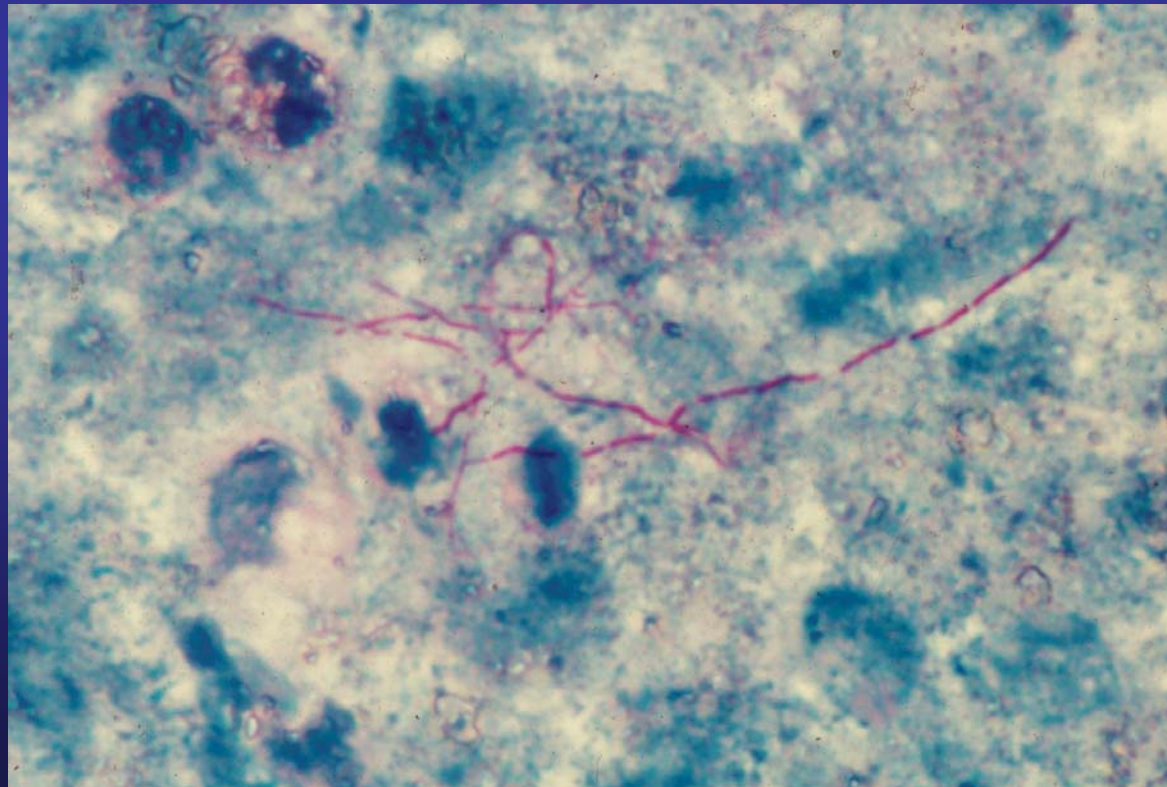
Mycobacterium ulcerans

Red staining rods in a Buruli ulcer
(Ziehl-Neelsen stain).



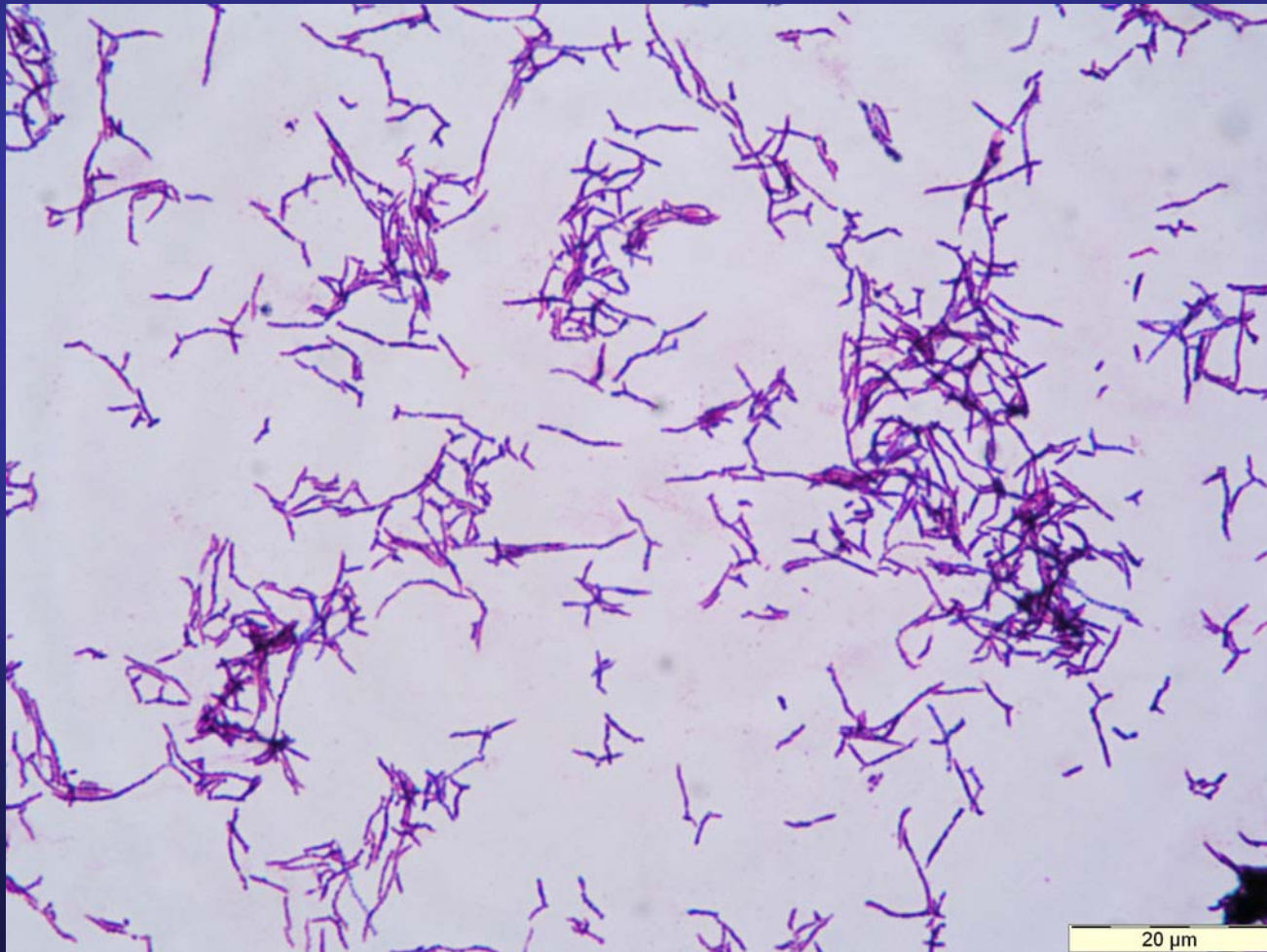
Nocardia asteroides

Red staining, acid fast, branched, beady hyphae in a direct smear of sputum (Ziehl-Neelsen stain).



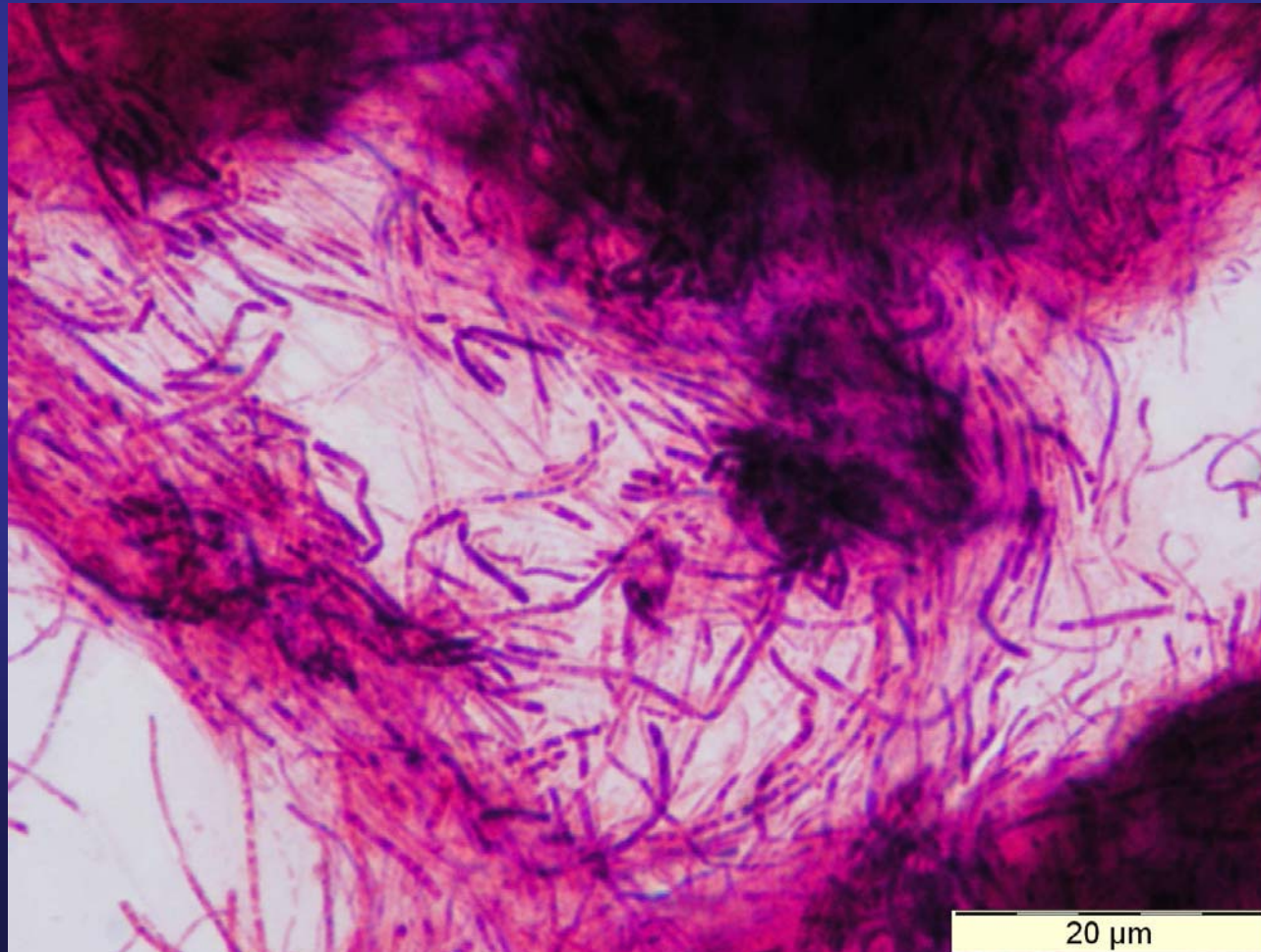
Nocardia asteroides

In culture from a sputum. Aerobic Gram-positive rods forming branched filaments (Gram-stain).



Nocardia brasiliensis

In culture from a pus. Aerobic Gram-positive rods forming filaments (Gram-stain).



Nocardia nova

Branched hyphae in a direct smear of purulent sputum
(Gram stain).

